



Certificate of Analysis

Powered by Confident LIMS
1 of 2

Therapeutic Naturals LLC

PO Box 891
Corvallis, MT 59828

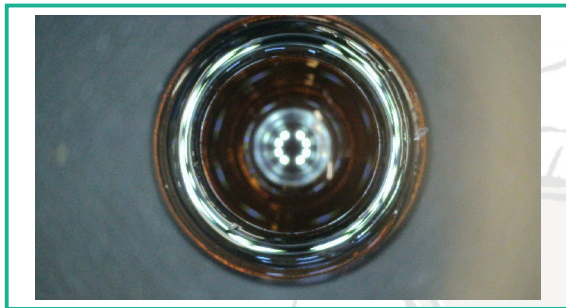
(406) 361-9237
Lic. #

Sample: 2403NDL0440.2561

Strain: CBD Full Spectrum Tincture 25mg/ml
Batch#: ; Batch Size: g
Classification:
Report Created: 03/30/2024;
Sampling: ; Environment:

CBD Full Spectrum Tincture 25mg/ml

Ingestible, Tincture; Harvest/Production Date:
Harvest Process Lot: ; METRC Batch: ; METRC Sample:



Safety

Not Tested Pesticides	Complete Microbials	Not Tested Mycotoxins
Not Tested Solvents	Not Tested Moisture	Not Tested Foreign Matter

Cannabinoids

0.510 mg/serving Total THC	28.131 mg/serving Total CBD	30.125 mg/serving Total Cannabinoids
---	--	---

Analyte	LOQ	Mass	Mass	Mass	Mass
	mg/serving	mg/serving	mg/g	mg/serving	mg/container
THCa	0.069	ND	ND	ND	ND
Δ9-THC	0.064	0.510	0.510	0.510	0.510
Δ8-THC	0.098	ND	ND	ND	ND
THCV	0.070	ND	ND	ND	ND
CBDa	0.059	ND	ND	ND	ND
CBD	0.064	28.131	28.131	28.131	28.131
CBDV	0.067	0.409	0.409	0.409	0.409
CBN	0.147	<LOQ	<LOQ	<LOQ	<LOQ
CBGa	0.063	ND	ND	ND	ND
CBG	0.057	0.475	0.475	0.475	0.475
CBC	0.071	0.600	0.600	0.600	0.600
Total THC		0.510	0.510	0.510	0.510
Total CBD		28.131	28.131	28.131	28.131
Total		30.125	30.125	30.125	30.125

Terpenes

--	--	--

reported per mL
Mass: 80.51mg
1 servings per container.
"Total THC = THCa * 0.877 + Δ9-THC Total CBD = CBDa * 0.877 + CBD Instrument:
HPLC ; Method: SOP_HPLC01"

Mass: g
Notes:



1408 Gold Ave
Bozeman, MT
(406) 219-6223
<http://www.nordiclabsmt.com>
Lic# L-100440-001

Christina Johnson
Scientific Director

Confident LIMS
All Rights Reserved
coa.support@confidentlims.com
(866) 506-5866
www.confidentlims.com



ND=Not Detected, NR=Not Reported, LOD=Limit of Detection, LOQ=Limit of Quantitation. This product has been tested by Nordic Labs using validated test methodologies. Values reported relate only to the single sample tested. No claims as to the efficacy, safety or other risks associated with any detected or non-detected levels of any compounds reported herein are made by Nordic Labs or representatives. All Pass/Fail limits are as specified by applicable Administrative Rules of Montana including, but not limited to, ARM 37.107.316. This Certificate shall not be reproduced except in full, without the written approval of the aforementioned lab and, for it to be fully valid, compliance sampling must be performed by a Nordic Labs representative. A "Fail" compliance test is repeated before reporting. Uncertainty information is available upon request. Potency, Pesticides, and Terpene values are reported by dry weight calculations for flower.



Certificate of Analysis

Powered by Confident LIMS
2 of 2

Therapeutic Naturals LLC

PO Box 891
Corvallis, MT 59828

(406) 361-9237
Lic. #

Sample: 2403NDL0440.2561

Strain: CBD Full Spectrum Tincture 25mg/ml

Batch#: ; Batch Size: g

Classification:

Report Created: 03/30/2024;

Sampling: ; Environment:

CBD Full Spectrum Tincture 25mg/ml

Ingestible, Tincture; Harvest/Production Date:
Harvest Process Lot: ; METRC Batch: ; METRC Sample:



Pesticides

Not Tested

Analyte	LOQ	Limit	Mass	Status

Microbials

Complete

Analyte	Limit	Mass	Status
	CFU/g	CFU/g	
Aspergillus flavus	0.900	NR	NT
Aspergillus fumigatus	0.900	NR	NT
Aspergillus niger	0.900	NR	NT
Aspergillus terreus	0.900	NR	NT
E. Coli	0.900	NR	NT
Salmonella SPP	0.900	NR	NT

Mass: g
Instrument: Plating and qPCR; Method: SOP_MIC01 and SOP_MIC03

Residual Solvents

Not Tested

Analyte	LOQ	Limit	Mass	Status

Mass: g

Mass: g

Mycotoxins

Not Tested

Analyte	LOQ	Limit	Mass	Status

Mass: g



1408 Gold Ave
Bozeman, MT
(406) 219-6223
<http://www.nordiclabsmt.com>
Lic# L-100440-001

Christina Johnson
Scientific Director

Confident LIMS
All Rights Reserved
coa.support@confidentlims.com
(866) 506-5866
www.confidentlims.com



ND=Not Detected, NR=Not Reported, LOD=Limit of Detection, LOQ=Limit of Quantitation. This product has been tested by Nordic Labs using validated test methodologies. Values reported relate only to the single sample tested. No claims as to the efficacy, safety or other risks associated with any detected or non-detected levels of any compounds reported herein are made by Nordic Labs or representatives. All Pass/Fail limits are as specified by applicable Administrative Rules of Montana including, but not limited to, ARM 37.107.316. This Certificate shall not be reproduced except in full, without the written approval of the aforementioned lab and, for it to be fully valid, compliance sampling must be performed by a Nordic Labs representative. A "Fail" compliance test is repeated before reporting. Uncertainty information is available upon request. Potency, Pesticides, and Terpene values are reported by dry weight calculations for flower.