

FullSpec 50mg AV-MCT



total cannabinoids	Δ^9 -THC	THCa	total THC
64.7 mg	2.45 mg	0.02 mg	2.46 mg
per mL	CBD	CBDa	total CBD
	58.28 mg	1.49 mg	59.58 mg

This Product Has Been Tested and Complies with 7USC1639o(1) Definition of Hemp



Stillwater Laboratories

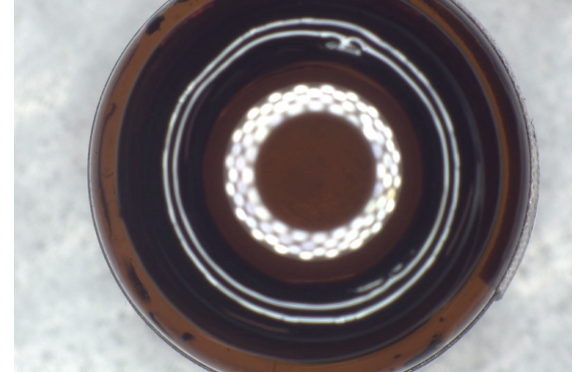
<https://portal.a2la.org/scopepdf/4961-01.pdf>

Avacado-MCT oils

Sample Handling

test ID	9474.2	sample wt	
type	tincture	order	9474
lab ID	1AH82	sample date	1/12/2021
unit	mL	unit weight	0.9 g

tincture



Methods

	method	equipment
weights	MSP-7.3.1	AUX120.1
potency	MSP-7.5.1	LC-2030
terpenes	MSP-7.5.1	QP2020/HS20
pesticides	MSP-7.5.1	LC-8060
mycotoxins	MSP-7.5.1	LC-8060
microbial	MSP-7.5.1	AriaMx/Hardy
solvents	MSP-7.5.1	QP2020/HS20
metals	MSP-7.5.1	ICPMS2030

Potency

	per mL	estimated error
tetrahydrocannabinolic acid (THCa)	0%	0.02 mg ± 0.02 mg
Δ^9 -tetrahydrocannabinol (Δ^9 THC)	.26%	2.45 mg ± 0.02 mg
Δ^8 -tetrahydrocannabinol (Δ^8 THC)	0%	0.00 mg ± 0.02 mg
tetrahydrocannabivarin (THCv)	0%	0.00 mg ± 0.02 mg
cannabidiolic acid (CBDa)	.16%	1.49 mg ± 0.02 mg
cannabidiol (CBD)	6.15%	58.28 mg ± 0.05 mg
cannabidivarin (CBDv)	.03%	0.26 mg ± 0.02 mg
cannabigerolic acid (CBGa)	.01%	0.12 mg ± 0.02 mg
cannabigerol (CBG)	.11%	1.05 mg ± 0.02 mg
cannabinol (CBN)	.01%	0.12 mg ± 0.02 mg
cannabichromene (CBC)	.1%	0.96 mg ± 0.02 mg

Terpenes

terpenes not tested / not required

Solvents

MT limit	1AH82	LOQ
----------	-------	-----

solvents not tested / not required

Pesticides (MT)

MT limit	1AH82	LOQ
----------	-------	-----

pesticides not tested / not required

Pesticides (other)

1AH82	LOQ
-------	-----

not tested / not required

Toxic Metals

MT limit	1AH82	LOQ
----------	-------	-----

metals not tested / not required

Microbial

MT limit	1AH82	LOQ
----------	-------	-----

microbial not tested

• All testing was completed onsite at 6073 US93N, Olney MT • Potency (cannabinoid concentration) is calculated from the equation: [cannabinoid] = [cannabinoid]_{HPLC} x volume_{dilution}/m_{dry}. Terpene concentration is calculated from the equation: [terpene] = (terpene mass)_{GCMS} / m_{dry}. •• Decarboxylated cannabinoid concentration is calculated from the equation XXX_{total} = 0.877 x XXX_a + XXX ••• Standards are used to calibrate the resulting data and estimate error using a standard estimate of error method; this is combined with error from weighing and dilution using the propagation of error formula S_y² = Σ (∂f/∂i)²s_i² where i is the contributor to error. The 95% confidence range is calculated from the equation: (concentration) ± t_{CL90} x S_y. Sampling error is not considered in error calculations.

Certified by:

Kyle Larson, MSc (Biology)

Deputy Director
6073 US93N, Olney MT 59927
406-881-2019 rdb@stwlabs.com

Printed 1/15/2021 12:09 PM