

certificate ID
2DD42

Therapeutic Naturals LLC
Full Spectrum CBD 15mg-ml

7USC1639 Certificate of Analysis



issue date 4/9/22 11:54 AM

This Product Has Been Tested and Complies with 7USC1639o(1)

Stillwater Laboratories

13645
order

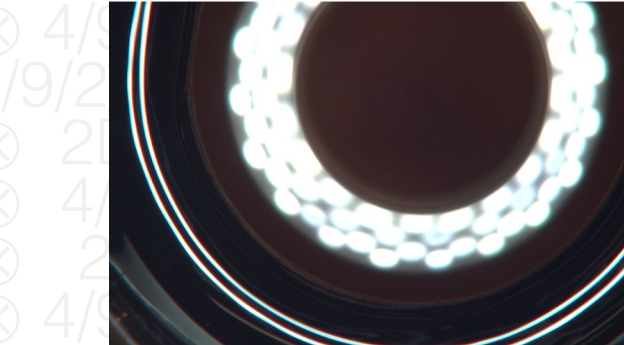
total cannabinoids **18.0mg** per mL

total THC‡ 0.8mg
total CBD‡ 16.7mg

Incoming Inspection MSP-7.5.1.2

Potency MSP-7.5.1.4 per mL

DESCRIPTION: Tincture sample (3.00g) received 4/7/2022 10:54:06 AM in a client-labeled bottle, mailed in by USPS. 1.



SECURITY FEATURE: WATERMARK MUST MATCH CERTIFICATE ID AND ISSUE DATE

	MSP-7.5.1.4	per mL	LOD	LOQ	error
total cannabinoids		18.0mg	0.07	0.22	±0.53mg
total THC‡		0.8mg	0.07	0.22	±0.24mg
total THC (THC+THCa)		0.8mg	0.07	0.22	±0.24mg
total CBD‡		16.7mg	0.07	0.22	±0.51mg
total CBD (CBD+CBDA)		16.7mg	0.07	0.22	±0.51mg
tetrahydrocannabinolic acid (THCa)		ND	0.08	0.23	±0.23mg
Δ9-tetrahydrocannabinol (Δ9 THC)		0.7mg	0.07	0.21	±0.23mg
Δ8-tetrahydrocannabinol (Δ8 THC)*		ND	0.10	0.29	±0.29mg
tetrahydrocannabivarin (THCv)		ND	0.08	0.24	±0.24mg
cannabinolic acid (CBDA)		<LOQ	0.07	0.20	±0.20mg
cannabidiol (CBD)		16.7mg	0.08	0.23	±0.51mg
cannabivarin (CBDv)		ND	0.08	0.23	±0.23mg
cannabigerolic acid (CBGA)		ND	0.07	0.20	±0.20mg
cannabigerol (CBG)		<LOQ	0.02	0.06	±0.06mg
cannabinol (CBN)		<LOQ	0.04	0.12	±0.12mg
cannabichromene (CBC)		0.3mg	0.07	0.22	±0.23mg

Pass / Fail Criteria

Microbial MSP-7.5.1.10b
NA

Pesticides MSP-7.5.1.8
not required / not requested

Solvents MSP-7.5.1.7
not required / not requested

Mycotoxins MSP-7.5.1.8
not required / not requested

Moisture MSP-7.5.1.3
not required / not requested

Metals MSP-7.5.1.7
not required / not requested

Certified by:



https://customer.a2la.org/index.cfm?event=directory_detail&labPID=423635B2-5128-4C6F-871A-419DCF43B0D7

Stillwater Laboratories Inc.
MT License L100060-002
6073 US93N Suite 5, Olney MT 59927
Ph 406-881-2019. www.stwllabs.com

These results are only valid for the samples tested. • Potency (cannabinoid concentration) is calculated as: [cannabinoid] = [cannabinoid]_{HPLC} x volume_{dilution}/m_{dry}. •• Decarboxyted cannabinoid concentration is calculated XXX_{total} = 0.877 x XXX_a + XXX ••• Standards are used to calibrate the resulting data and estimate error using a standard estimate of error method; LOD is the limit of detection (3.3s), LOQ is the limit of quantification (3xLOD), and experimental error is calculated from weighing, dilution, and interpolation error using the formula s_g² = Σ (∂f/∂i)²s_i² where i is the contributor to error. The 95% confidence range is calculated from: (concentration) ± t_{CL90} x s_g. Sampling error is not considered in error calculations. ND = not detected (< LOD), NT = not tested, NL = no limit, NA = not applicable. ‡ = decarbed, * = analyte is off-scope.

certificate ID

2DD42

Therapeutic Naturals LLC

ANALYTICAL DATA

Stillwater
Laboratories



Full Spectrum CBD 15mg-ml

Report Version: 1
Analysis Location: L-100060-

13645
order

order 13645
rec'd date 4/7/2022 10:54:06 AM
issue date 4/9/2022 11:54:11 AM

Methods and Instruments

MSP-7.3.1.1	BAL-05	4/7/2022	MSP-7.5.1.7	QP2020/HS20	4/8/2022
MSP-7.5.1.2	YSC HD801m12	4/8/2022	MSP-7.5.1.8	LCMS8060	4/8/2022
MSP-7.5.1.3	6MOC63u	4/8/2022	MSP-7.5.1.8	LCMS8060	4/8/2022
MSP-7.5.1.4	LC-2030C	4/8/2022	MSP-7.5.1.10b	Hardy Diag	4/8/2022
MSP-7.5.1.6	QP2020/HS20	4/8/2022	MSP-7.5.1.11	ICPMS2030	4/8/2022

Microbial

	MSP-7.5.1.10b	limit	LOD	LOQ	error	result
E. coli	NT	0CFU				NA
STEC (PCR)	NT	0CFU				NA
Salmonella (PCR)	NT	0CFU				NA
A. flavus (PCR)	NT	0CFU				NA
A. fumigatus (PCR)	NT	0CFU				NA
A. terreus (PCR)	NT	0CFU				NA
A. terreus (PCR)	NT	0CFU				NA

SECURITY FEATURE: WATERMARK MUST MATCH CERTIFICATE ID AND ISSUE DATE

These results are only valid for the samples tested. • Standards are used to calibrate the resulting data and estimate error using a standard estimate of error method; LOD is the limit of detection (3.3s), LOQ is the limit of quantification (3xLOD), and experimental error is calculated from weighing, dilution, and interpolation error using the formula $s_g^2 = \sum (\partial f / \partial i)^2 s_i^2$ where i is the contributor to error. The 95% confidence range is calculated from: (concentration) $\pm t_{CL90} \times s_g$. Sampling error is not considered in error calculations. ND = not detected (< LOD), NT = not tested, NL = no limit, NA = not applicable.

Certified by:



Stillwater Laboratories Inc.
MT License L0001, L00007, L00010
6073 US93N Suite 5, Olney MT 59927
1408 Unit 4 Gold Ave, Bozeman MT 59715
Ph 406-881-2019. www.stwlab.com