



15mg -ml FS

7USC1639 Certificate of Analysis

Therapeutic Naturals LLC

Stillwater Laboratories

certificate ID 1FD53

total cannabinoids 18.1mg per mL
THC‡ 0.7mg CBD‡ 16.5mg terpenes

This Product Has Been Tested and Complies with 7USC1639o(1)

order 10952
analysis date 6/5/2021 12:10:55 PM
test tag
sample wgt

0.000 infused

Inspection MSP-7.5.1.2

DESCRIPTION: Tincture sample received in a client-labeled bottle, mailed in by USPS. 1.

- caryophyllene
humulene
terpinolene
ocimene
beta pinene
alpha pinene
limonene
myrcene
linalool

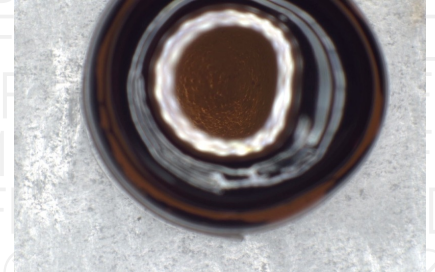


Table with columns: Potency per mL, MSP-7.5.1.4, LOD, LOQ, error (95%CI k=2), Terpenes, MSP-7.5.1.6, MSP-7.5.1.6. Rows include total CBD‡, total CBD (CBD+CBDA), tetrahydrocannabinolic acid (THCa), etc.

Table with columns: Microbial, MSP-7.5.1.10, limit. Rows include E.coli, Salmonella sp., molds.

Table with columns: Pesticides, MSP-7.5.1.8, limit.

Table with columns: Solvents, MSP-7.5.1.7, limit.

INSTRUMENTS
potency: HPLC (LC2030C-UV)
terpenes: GCMS (QP2020/HS20)
solvents: GCMS (QP2020/HS20)
pesticides: LCMSMS (LC8060)
mycotoxins: LCMSMS (LC8060)
microbial: qPCR (AriaMx) and plating
metals: ICPMS (ICPMS-2030)

SECURITY FEATURE: WATERMARK MUST MATCH CERTIFICATE ID AND ISSUE DATE

Certified by: [Signature]

Stillwater Laboratories Inc.
MT License L00001, 7, 8
6073 US93N Suite 5
Olney MT 59927
406-881-2019

The data in this report is the property of Therapeutic Naturals LLC and is administered by Stillwater Labs. The format, layout, and security features of this report are copyrighted by Stillwater Laboratories Inc. © 2020



Printed
6/9/2021 10:37 AM

https://customer.a2la.org/index.cfm?event=directory.detail&labPID=423635B2-5128-4C6F-871A-419DCF43B0D7