



# Certificate of Analysis

Powered by Confident LIMS  
1 of 2

## Therapeutic Naturals LLC

PO Box 891  
Corvallis, MT 59828

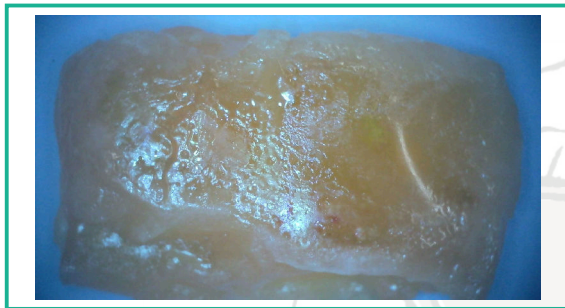
(406) 361-9237  
Lic. #

Sample: 2403NDL0440.2555

Strain: CBD LOZENGES  
Batch#: ; Batch Size: g  
Classification:  
Report Created: 03/30/2024;  
Sampling: ; Environment:

## CBD LOZENGES

Ingestible, Hard Lozenge; Harvest/Production Date:  
Harvest Process Lot: ; METRC Batch: ; METRC Sample:



## Safety

Not Tested Pesticides	Complete Microbials	Not Tested Mycotoxins
Not Tested Solvents	Not Tested Moisture	Not Tested Foreign Matter

## Cannabinoids

<LOQ Total THC	8.234 mg/serving Total CBD	8.234 mg/serving Total Cannabinoids
-------------------	----------------------------------	---

Analyte	LOQ mg/serving	Mass mg/serving	Mass mg/g	Mass mg/serving	Mass mg/container
THCa	0.372	ND	ND	ND	ND
Δ9-THC	0.345	<LOQ	<LOQ	<LOQ	<LOQ
Δ8-THC	0.529	ND	ND	ND	ND
THCV	0.378	ND	ND	ND	ND
CBDa	0.318	ND	ND	ND	ND
CBD	0.345	8.234	1.525	8.234	8.234
CBDV	0.362	<LOQ	<LOQ	<LOQ	<LOQ
CBN	0.794	ND	ND	ND	ND
CBGa	0.340	ND	ND	ND	ND
CBG	0.308	<LOQ	<LOQ	<LOQ	<LOQ
CBC	0.383	<LOQ	<LOQ	<LOQ	<LOQ
Total THC		<LOQ	<LOQ	<LOQ	<LOQ
Total CBD		8.234	1.525	8.234	8.234
Total		8.234	1.525	8.234	8.234

## Terpenes

--	--	--

1 lozenge = 5.398g  
Mass: 87.17mg  
1 servings per container.  
"Total THC = THCa \* 0.877 + Δ9-THC Total CBD = CBDa \* 0.877 + CBD Instrument:  
HPLC ; Method: SOP\_HPLC01"

Mass: g  
Notes:



1408 Gold Ave  
Bozeman, MT  
(406) 219-6223  
<http://www.nordiclabsmt.com>  
Lic# L-100440-001

Christina Johnson  
Scientific Director

Confident LIMS  
All Rights Reserved  
[coa.support@confidentlims.com](mailto:coa.support@confidentlims.com)  
(866) 506-5866  
[www.confidentlims.com](http://www.confidentlims.com)



ND=Not Detected, NR=Not Reported, LOD=Limit of Detection, LOQ=Limit of Quantitation. This product has been tested by Nordic Labs using validated test methodologies. Values reported relate only to the single sample tested. No claims as to the efficacy, safety or other risks associated with any detected or non-detected levels of any compounds reported herein are made by Nordic Labs or representatives. All Pass/Fail limits are as specified by applicable Administrative Rules of Montana including, but not limited to, ARM 37.107.316. This Certificate shall not be reproduced except in full, without the written approval of the aforementioned lab and, for it to be fully valid, compliance sampling must be performed by a Nordic Labs representative. A "Fail" compliance test is repeated before reporting. Uncertainty information is available upon request. Potency, Pesticides, and Terpene values are reported by dry weight calculations for flower.



# Certificate of Analysis

Powered by Confident LIMS  
2 of 2

## Therapeutic Naturals LLC

PO Box 891  
Corvallis, MT 59828

(406) 361-9237  
Lic. #

## Sample: 2403NDL0440.2555

Strain: CBD LOZENGES  
Batch#: ; Batch Size: g  
Classification:  
Report Created: 03/30/2024;  
Sampling: ; Environment:

## CBD LOZENGES

Ingestible, Hard Lozenge; Harvest/Production Date:  
Harvest Process Lot: ; METRC Batch: ; METRC Sample:



### Pesticides

### Not Tested

Analyte	LOQ	Limit	Mass	Status
Not Tested				

### Microbials

### Complete

Analyte	Limit	Mass	Status
	CFU/g	CFU/g	
Aspergillus flavus	0.900	NR	NT
Aspergillus fumigatus	0.900	NR	NT
Aspergillus niger	0.900	NR	NT
Aspergillus terreus	0.900	NR	NT
E. Coli	0.900	NR	NT
Salmonella SPP	0.900	NR	NT

Mass: g  
Instrument: Plating and qPCR; Method: SOP\_MIC01 and SOP\_MIC03

### Residual Solvents

### Not Tested

Analyte	LOQ	Limit	Mass	Status
Not Tested				

Mass: g

Mass: g

### Mycotoxins

### Not Tested

Analyte	LOQ	Limit	Mass	Status
Not Tested				

Mass: g



1408 Gold Ave  
Bozeman, MT  
(406) 219-6223  
<http://www.nordiclabsmt.com>  
Lic# L-100440-001

Christina Johnson  
Scientific Director

Confident LIMS  
All Rights Reserved  
[coa.support@confidentlims.com](mailto:coa.support@confidentlims.com)  
(866) 506-5866  
[www.confidentlims.com](http://www.confidentlims.com)



ND=Not Detected, NR=Not Reported, LOD=Limit of Detection, LOQ=Limit of Quantitation. This product has been tested by Nordic Labs using validated test methodologies. Values reported relate only to the single sample tested. No claims as to the efficacy, safety or other risks associated with any detected or non-detected levels of any compounds reported herein are made by Nordic Labs or representatives. All Pass/Fail limits are as specified by applicable Administrative Rules of Montana including, but not limited to, ARM 37.107.316. This Certificate shall not be reproduced except in full, without the written approval of the aforementioned lab and, for it to be fully valid, compliance sampling must be performed by a Nordic Labs representative. A "Fail" compliance test is repeated before reporting. Uncertainty information is available upon request. Potency, Pesticides, and Terpene values are reported by dry weight calculations for flower.